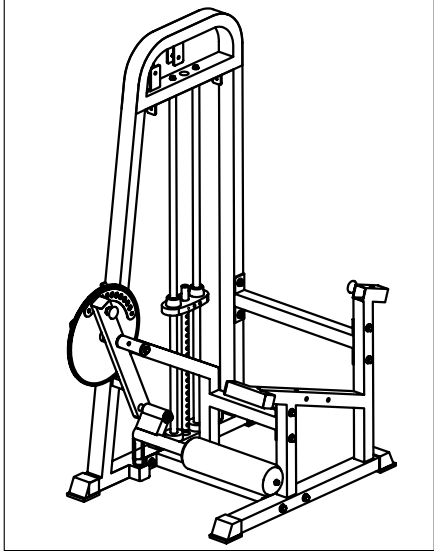


STEP 1

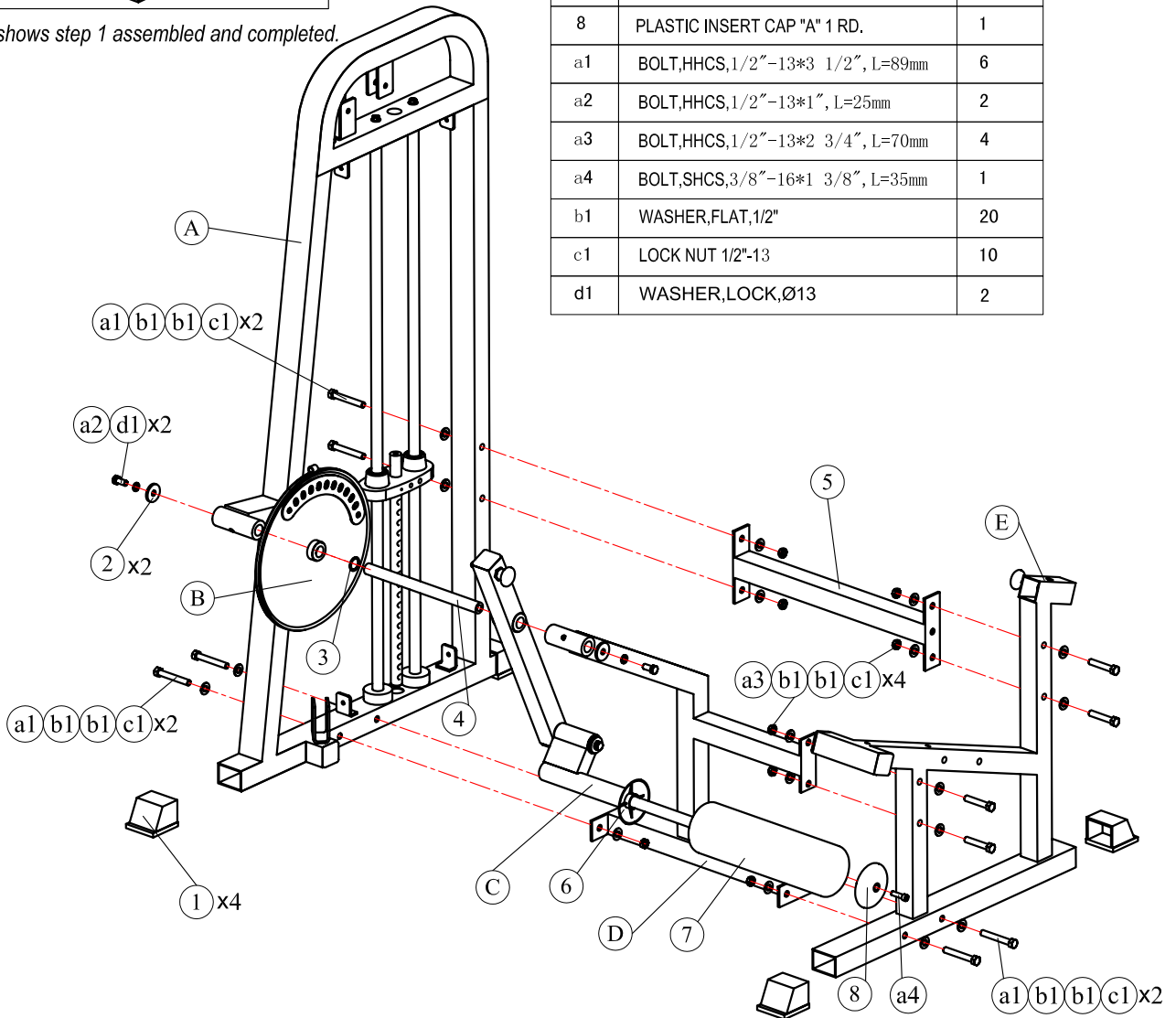
NOTE: During each assembly step, ensure that all bolts and nuts are in place and partially threaded in before completely tightening any one bolt.
Two people will be required to perform this procedure.



Above shows step 1 assembled and completed.

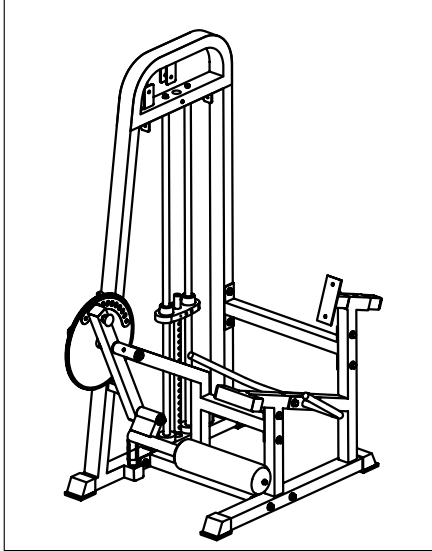
Part list of step 1

ITEM	DESCRIPTION	QTY
A	ASSY,WEIGHT STACK FRAME	1
B	ASSY,CAM	1
C	ASSY,ARM	1
D	ASSY,BOTTOM CROSS BRACE	1
E	ASSY, MAIN FRAME	1
1	FOOT COVER 2"x2.75"	4
2	CHROME WASHER (Φ42*Φ13*4t)	2
3	WHITE LINING RING (Ø32*Ø25*1.7t)	1
4	AXES (Ø25*337)	1
5	TOP CROSS BRACE	1
6	PLASTIC INSERT CAP "B" 1 RD.	1
7	FOOT ROLL (Φ23*Φ120*400)	1
8	PLASTIC INSERT CAP "A" 1 RD.	1
a1	BOLT,HHCS,1/2"-13*3 1/2", L=89mm	6
a2	BOLT,HHCS,1/2"-13*1", L=25mm	2
a3	BOLT,HHCS,1/2"-13*2 3/4", L=70mm	4
a4	BOLT,SHCS,3/8"-16*1 3/8", L=35mm	1
b1	WASHER,FLAT,1/2"	20
c1	LOCK NUT 1/2"-13	10
d1	WASHER,LOCK,Ø13	2



STEP 2

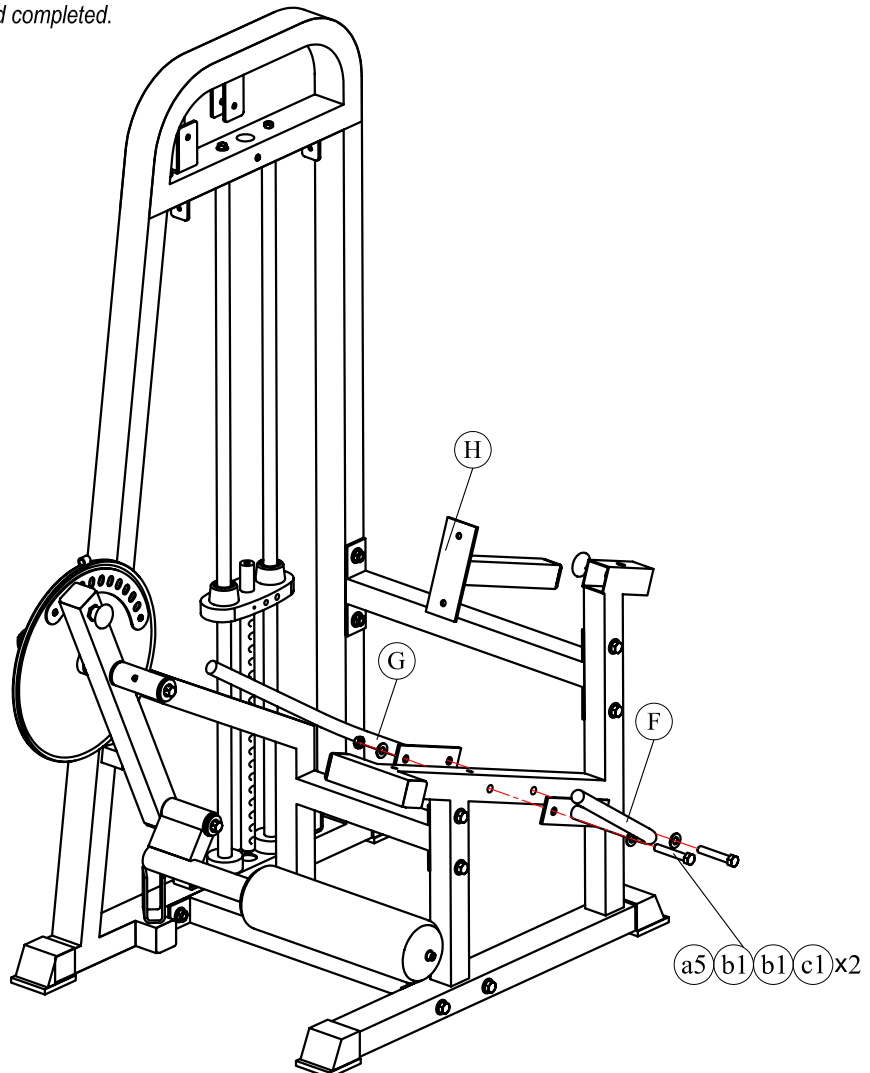
NOTE: During each assembly step, ensure that all bolts and nuts are in place and partially threaded in before completely tightening any one bolt. Two people will be required to perform this procedure.



Above shows step 2 assembled and completed.

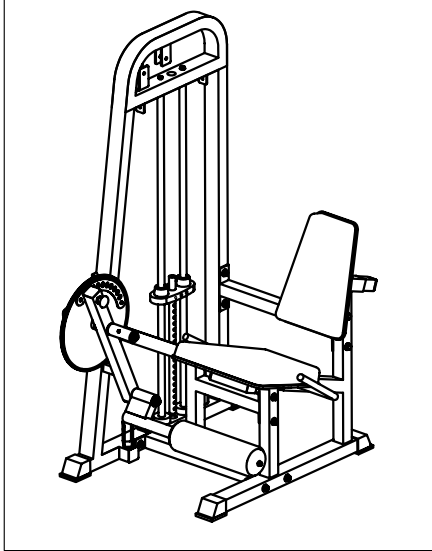
Part list of step 2

ITEM	DESCRIPTION	QTY
F	ASSY,LEFT ARM	1
G	ASSY,RIGHT ARM	1
H	ASSY,MOVABLE BACK PAD TUBE	1
a5	BOLT,HHCS,1/2"-13*3", L=76mm	2
b1	WASHER,FLAT,1/2"	4
c1	LOCK NUT 1/2"-13	2



STEP 3

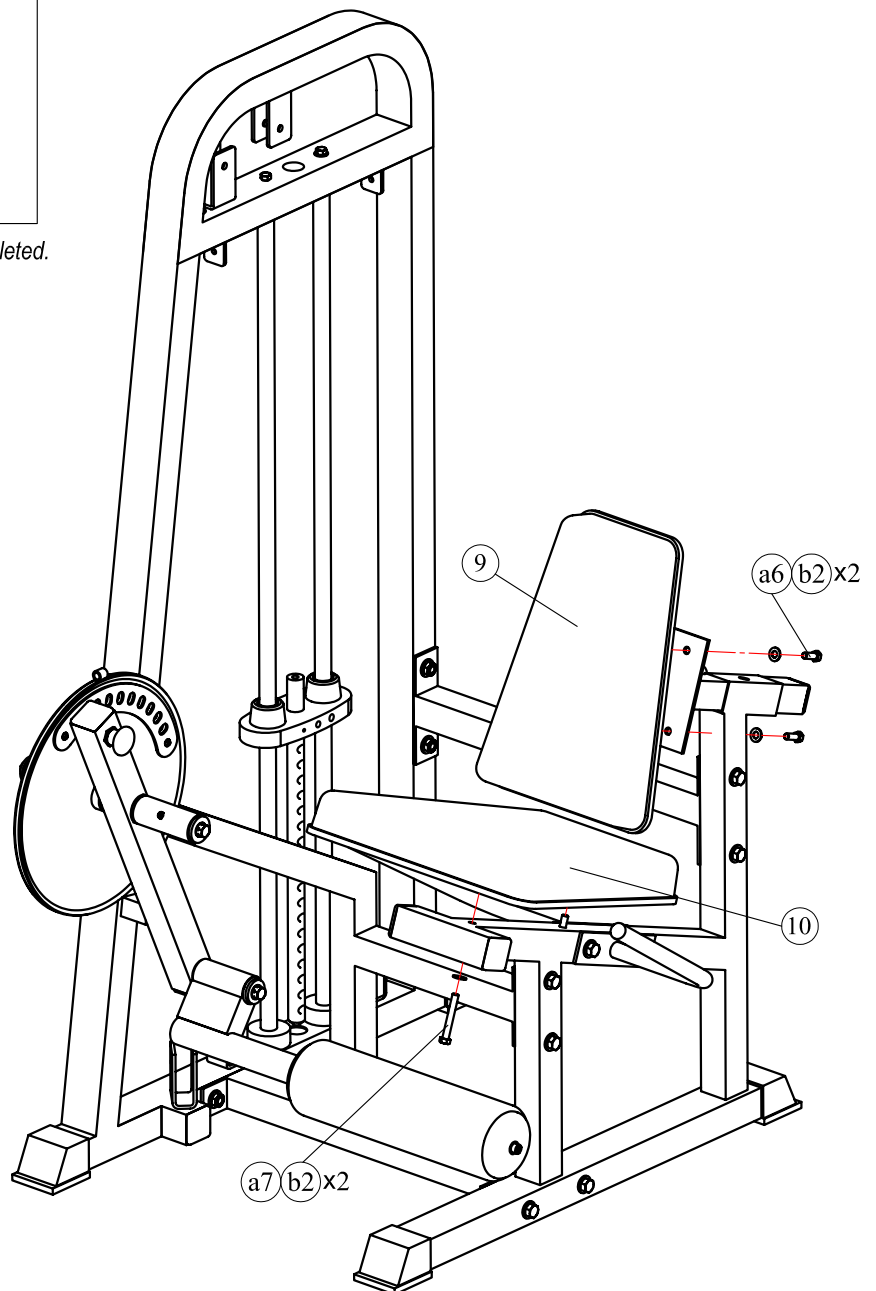
NOTE: During each assembly step, ensure that all bolts and nuts are in place and partially threaded in before completely tightening any one bolt. Two people will be required to perform this procedure.



Above shows step 3 assembled and completed.

Part list of step 3



ITEM	DESCRIPTION	QTY
9	BACK PAD	1
10	SEAT PAD	1
a6	BOLT, HHCS, 3/8"-16*1", L=25mm	2
a7	BOLT, HHCS, 3/8"-16*2 3/4", L=70mm	2
b2	WASHER, FLAT, 3/8"	4

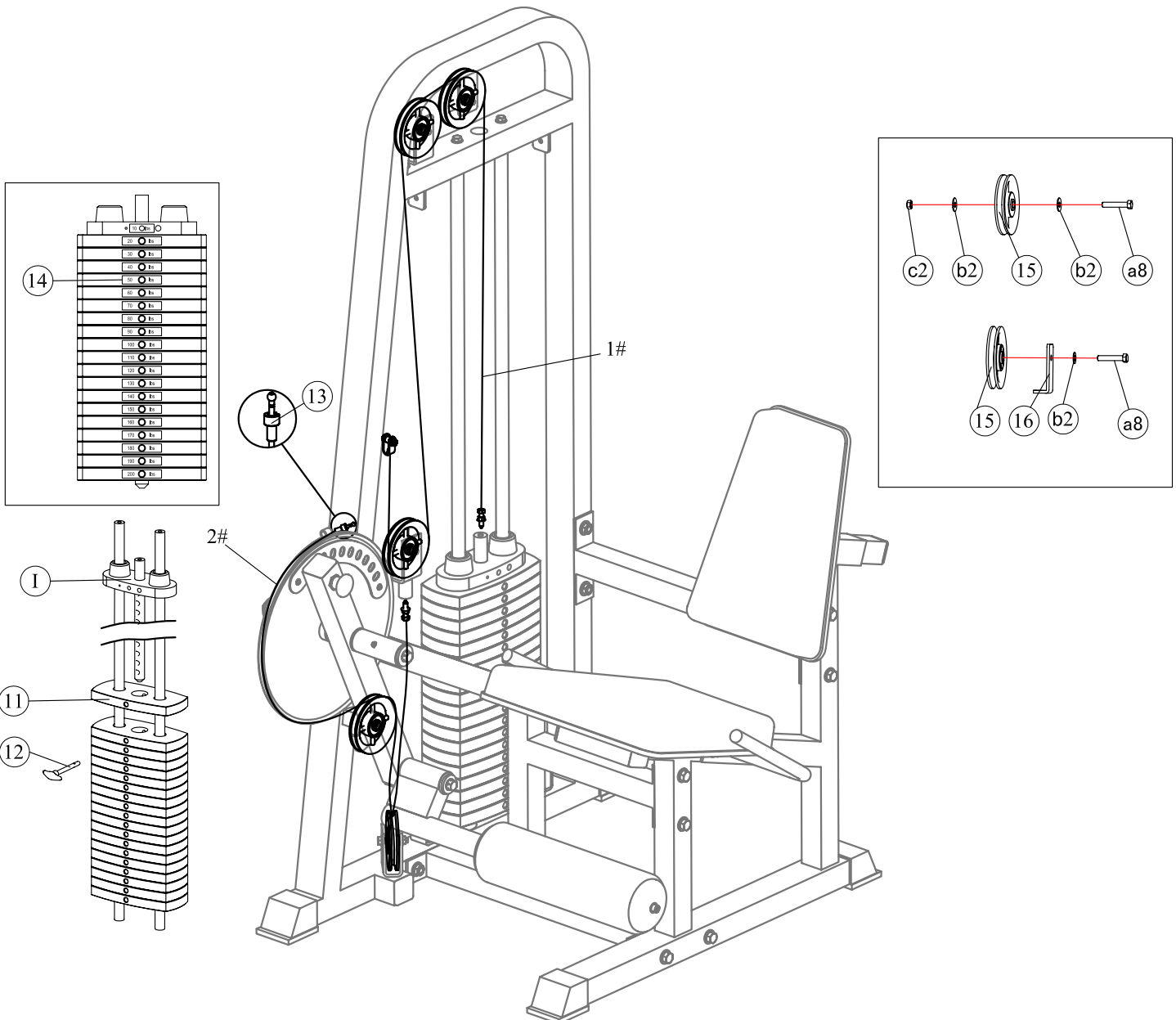


STEP 4

NOTE: During each assembly step, ensure that all bolts and nuts are in place and partially threaded in before completely tightening any one bolt. Two people will be required to perform this procedure.

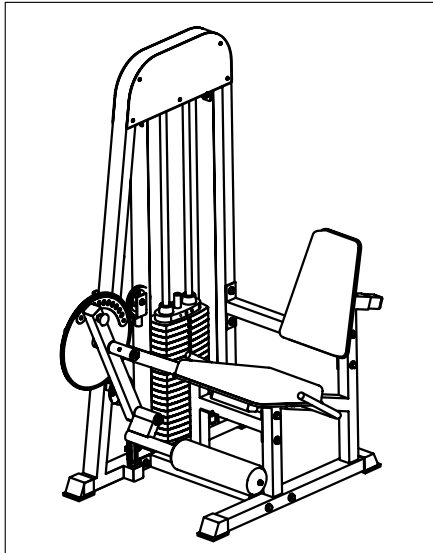
Part list of step 4

ITEM	DESCRIPTION	QTY	ITEM	DESCRIPTION	QTY
1	ASSY, TOP WEIGHT	1	16	CABLE RETAINER BRACKET(4.5")	1
11	WEIGHT STACK	19	a8	BOLT, HHCS, 3/8"-16*2", L=50mm	5
12	SELECTOR PIN	1	b2	WASHER, FLAT, 3/8"	9
13	CABLE END COLLET, ALUMINIUM	1	c2	LOCK NUT 3/8"-16	4
14	WEIGHT PLATE DECAL (10-200LB)	1	1#		1
15	NYLON PULLEY ASSEMBLY (4.5")	5	2#		1



STEP 5

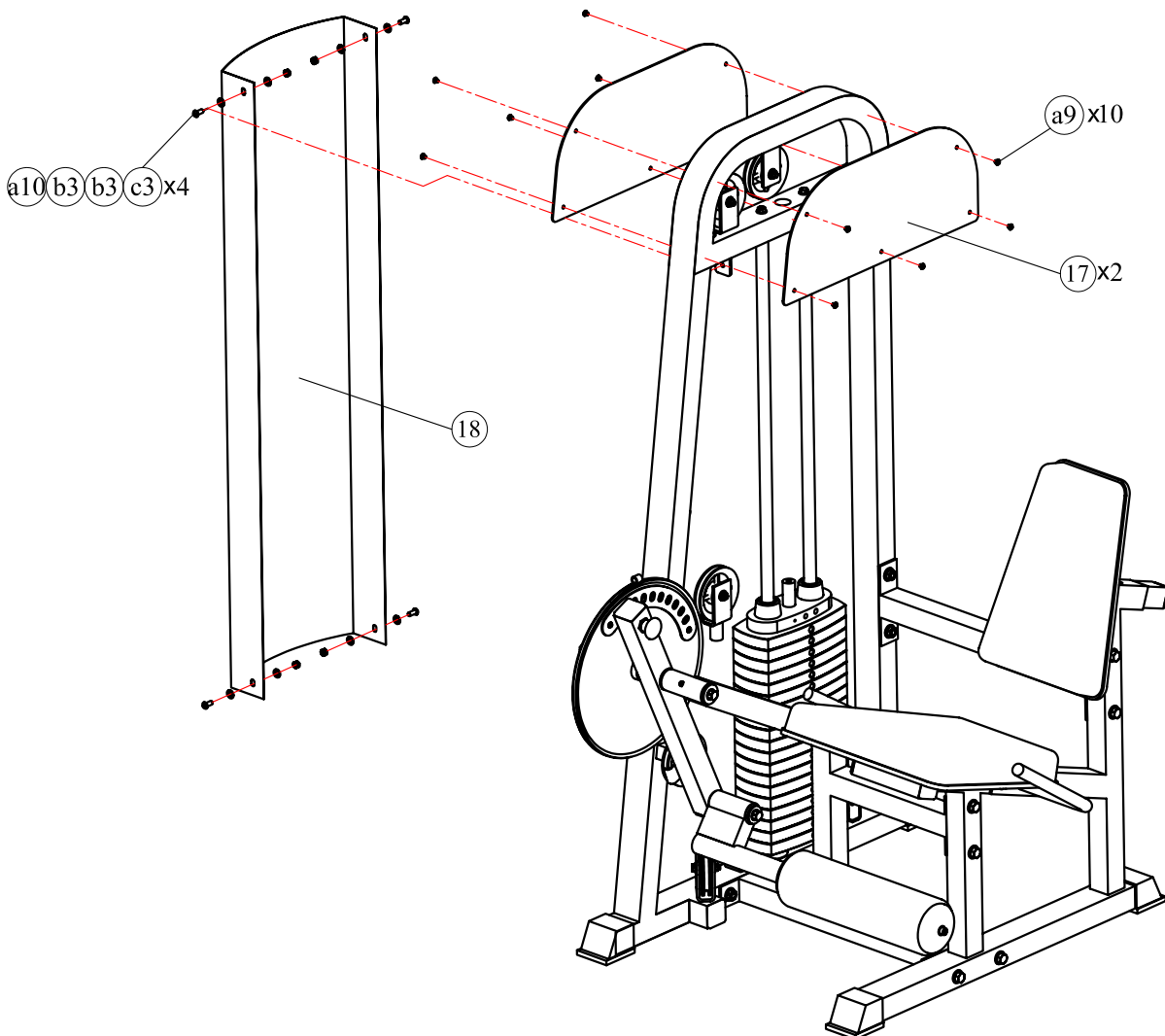
NOTE: During each assembly step, ensure that all bolts and nuts are in place and partially threaded in before completely tightening any one bolt.



Above shows step 4 assembled and completed.

Part list of step 5

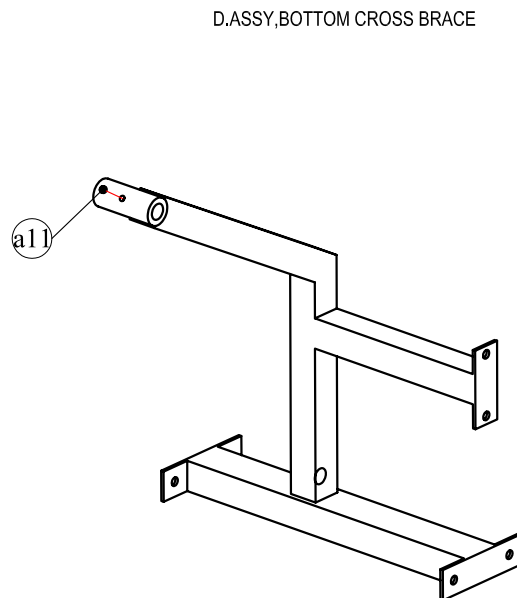
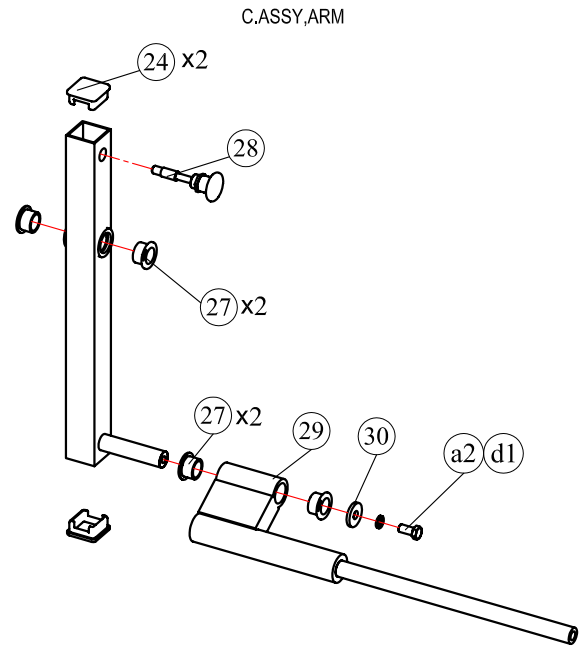
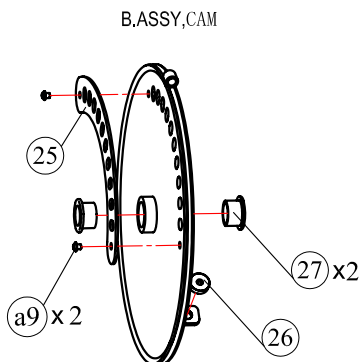
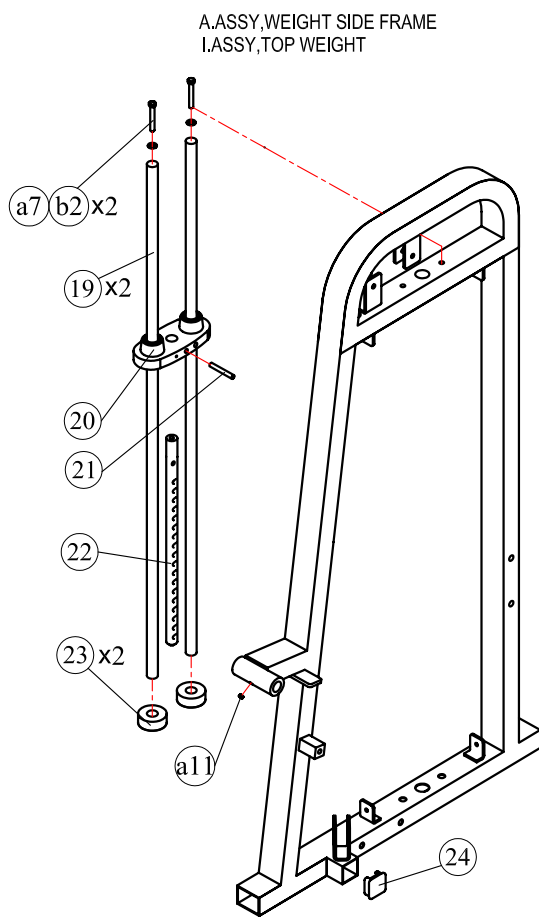
ITEM	DESCRIPTION	QTY
17	WEIGHT STACK FRAME SHIELD	2
18	WEIGHT STACK SHIELD	1
a9	BOLT,BHCS,1/4"-20*1/4",L=8mm	10
a10	BOLT,BHCS,5/16"-18*3/4",L=16mm	4
b3	WASHER,FLAT,5/16"	8
c3	NUT , 5/16"-18	4



PRE-ASSEMBLY

PART LIST:

ITEM	DESCRIPTION	QTY
A	ASSY,WEIGHT STACK FRAME	1
B	ASSY,CAM	1
C	ASSY,ARM	1
D	ASSY,BOTTOM CROSS BRACE	1
I	ASSY,TOP WEIGHT	1

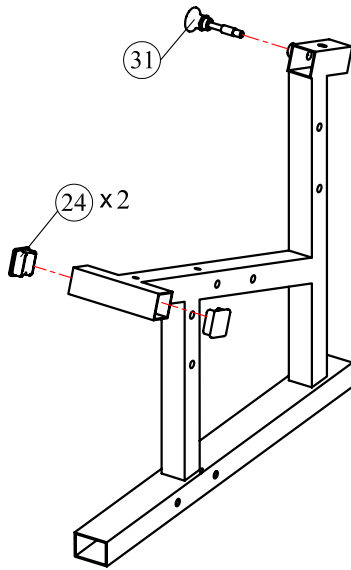


PRE-ASSEMBLY

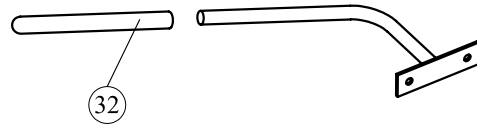
PART LIST:

ITEM	DESCRIPTION	QTY
E	ASSY, MAIN FRAME	1
F	ASSY, LEFT ARM	1
G	ASSY, RIGHT ARM	1
H	ASSY, MOVABLE BACK PAD TUBE	1

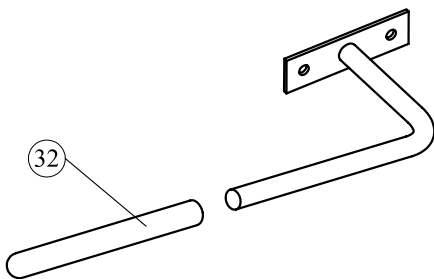
E.ASSY, MAIN FRAME



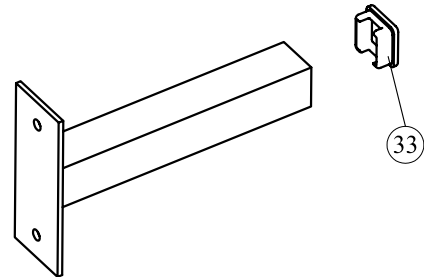
G.ASSY, RIGHT ARM



F.ASSY, LEFT ARM



H.ASSY, MOVABLE BACK PAD TUBE



PART LIST 1



PART LIST:

ITEM	DESCRIPTION	QTY
1	FOOT COVER 2"x2.75"	4
2	CHROME WASHER (Φ42*Φ13*4t)	2
3	WHITE LINING RING (Ø32*Ø25*1.7t)	1
4	AXES (Ø25*337)	1
5	TOP CROSS BRACE	1
6	PLASTIC INSERT CAP "B" 1 RD.	1
7	FOOT ROLL (Φ23*Φ120*400)	1
8	PLASTIC INSERT CAP "A" 1 RD.	1
9	BACK PAD	1
10	SEAT PAD	1
11	WEIGHT STACK	19
12	SELECTOR PIN	1
13	CABLE END COLLET,ALUMINIUM	1
14	WEIGHT PLATE DECAL (10-200LB)	1
15	NYLON PULLEY ASSEMBLY(4.5")	5
16	CABLE RETAINER BRACKET(4.5")	1
17	WEIGHT STACK FRAME SHIELD	2
18	WEIGHT STACK SHIELD	1
19	WEIGHT STACK GUIDE ROD(L=1400)	2
20	TOP WEIGHT	1
21	SPRING PIN(Ø10*70)	1
22	WEIGHT STACK PIN 19HOLE	1
23	RUBBER DONUT	2
24	PLASTIC INSERT CAP(50×50mm)	5
25	SHELTER	1
26	RUBBER BUMPER	1
27	POWDER METALLURGY BUSHING 1 IDx1 1/4 OD	6
28	PUSH PULL PIN (L=100mm)	1
29	ROLL TUBE	1
30	CHROME WASHER (Φ38*Φ13*5t)	1
31	PUSH PULL PIN (L=72,LOCKED)	1
32	HANDLE (Ø24*380mm)	2
33	PLASTIC INSERT CAP(45×45mm)	1

HARDWARE LIST:

ITEM	DESCRIPTION	QTY
a1	BOLT,HHCS,1/2"-13*3 1/2", L=89mm	6
a2	BOLT,HHCS,1/2"-13*1", L=25mm	3
a3	BOLT,HHCS,1/2"-13*2 3/4", L=70mm	4
a4	BOLT,SHCS,3/8"-16*1 3/8", L=35mm	1
a5	BOLT,HHCS,1/2"-13*3", L=76mm	2
a6	BOLT,HHCS,3/8"-16*1",L=25mm	2
a7	BOLT,HHCS,3/8"-16*2 3/4",L=70mm	4
a8	BOLT,HHCS,3/8"-16*2", L=50mm	5
a9	BOLT,BHCS,1/4"-20*1/4",L=8mm	12
a10	BOLT,BHCS,5/16"-18*3/4", L=16mm	4
a11	SET SCREW,M10×10	2
b1	WASHER,FLAT,1/2"	24
b2	WASHER,FLAT,3/8"	15
b3	WASHER,FLAT,5/16"	8
c1	LOCK NUT 1/2"-13	12
c2	LOCK NUT 3/8"-16	4
c3	NUT , 5/16"-18	4
d1	WASHER,LOCK,Ø13	3

CABLE LIST:

1#		1
2#		1

Hardware guide:

